

E680 Hiawatha Dr

#418 Lake Delton

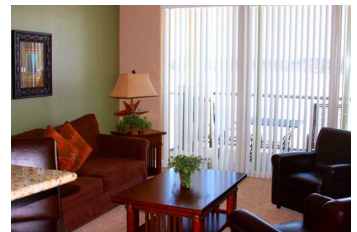
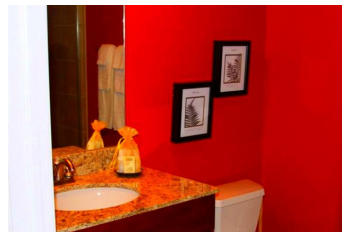
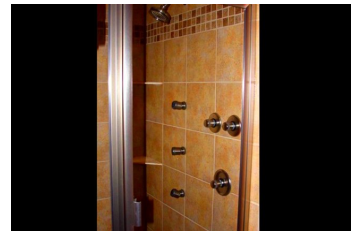
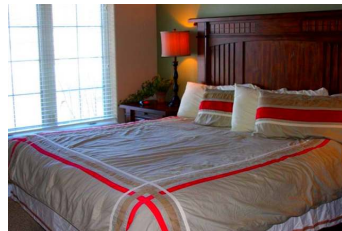
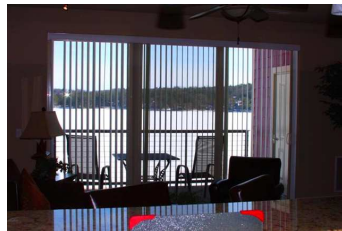
MLS #:1585912

\$167,000



Bedrooms 1
Total Finished SqFt 800
Full Baths Total 0
1/2 Baths Total 1
Estimated Age 2
Condo Project Name Rhapsody/Renaissance
Condo Fee 431
Units in Building 30
Floor Number 1
Fireplace Living room, Electric
Parking per Unit Outside

Lake front condo living. Comfortable one bedroom unit that accommodates 4 people w/sleeper sofa. Perfect views of Lake Delton. Private entrance, main floor (no steps), granite counters, ceramic tile, stainless steel appliances, full body massage shower. On site amenities-indoor pool, outdoor pool, firepit, spa, sandy beaches, water fall display, fishing pier, boat slips available. Sit back on your own deck and enjoy lake living at an affordable price. Rental program available but optional.



Directions: I90/94 to exit 92 (Hwy 12), to R on WI Dells Pkwy, to R on E. Hiawatha to property

High School: Call School District

Middle School: Call School District

Elementary: Call School District

Living Room: 14x18
Dining Room:
Kitchen: 10x11
Family Room:

Master Bedroom: 10x15
Second Bedroom:
Third Bedroom:
Fourth Bedroom:

Laundry Level: N

Features: Private Entry, Patio
 Breakfast bar, Solid surface countertops, Range/Oven, Refrigerator, Dishwasher, Microwave, Disposal
 Tile Floors, Cable/Satellite Available, All window coverings, High Speed Internet, 9ft + Ceiling



Bob Sprysl
(608) 225-9626
bsprysl@ureach.com
Restaino & Associates



SCWMLS and brokers do not guarantee accuracy of information. All material information must be independently verified by buyer. Equal housing opportunity listing.

Listing information courtesy of: [Restaino & Associates](#)